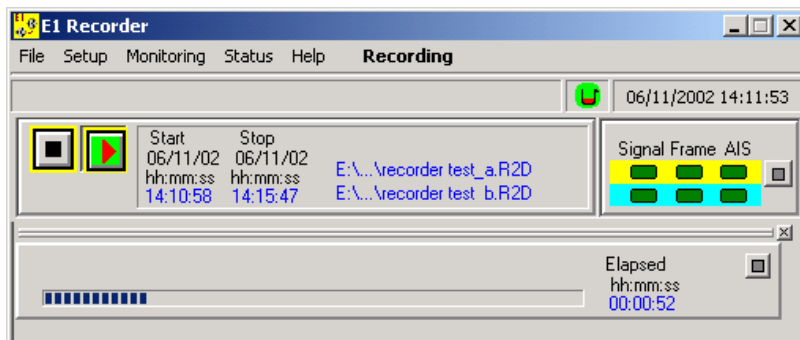


R2D3 E1/PRI Record/Replay Software

E1/PRI Recorder and Replayer application software for SomerData R2D3 E1/PRI Data Capture Cards



SomerData's R2D3 Data Recorder software supports real-time recording and replay of E1/PRI dual-stream 2Mbits/s HDB3 signals on a standard PC hard disk drive.

2048 kbit/s HDB3 signals are recorded without the need to identify or specify a protocol or any other network-specific parameters. Bitstreams are captured as raw data files, meaning that all types of traffic, including signalling, framing, alarms, DTMF tones and multiple-timeslot activity, are recorded as full-frame or selective timeslot data files.

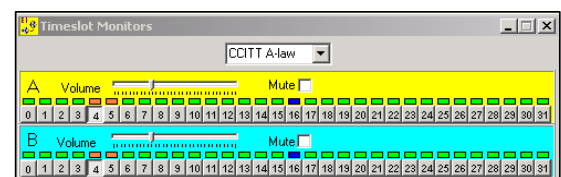
Recorder and *Replayer* applications run under Windows XP™ and Windows 2000™. The user interface provides recorder control and status, including input signal status and selection of hex or bitmap data display. A-Law and μ -Law audio can be monitored through speakers or headphones by selecting the required timeslots for each stream.

Control and status can be implemented over a local or wide area network connection using TCP-IP. With the remote control server software running on the recorder, users are able to view and control the recorder from a remote workstation running client software, which is available for Windows™ and other platforms.

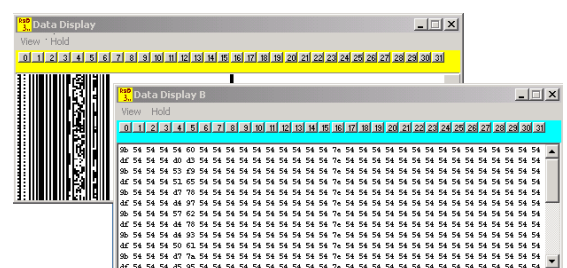
The *Recorder* application allows recording for up to 2 hours per full-frame file, or up to 24 hours for selective timeslot recording (depending upon the number of excluded timeslots). Multiple files can be recorded up to the available disk capacity. Selective timeslot recording allows the choice of masking or excluding timeslots to provide maximum versatility for replay, analysis and onward transmission of data files.

For replaying data files that have been recorded on a SomerData PC-VDR, the *Replayer* application enables sequential data files to be replayed without interruption. Alternatively, where the required data selection spans two sequential files, selected fragments can be stitched into a single contiguous file for subsequent replay or analysis. Selected fragments of recordings can be dubbed to new full-frame files or exported with selected timeslots masked or excluded.

The stand-alone *File Reader* application provides off-line replay of *.R2D data files and can be used to replay analogue Audio timeslots (A-Law and μ -Law) through the PC sound card/speaker and view HEX/bitmap data displays. Selected fragments of recordings can be dubbed to new full-frame files or exported with selected timeslots masked or excluded.



Audio Timeslot Monitor



Data Displays (Bitmap and Hex)

Application Software Functions

Recorder and *Replayer* programs run on Windows XP™ and Windows 2000™ PCs with a SomerData R2D3 E1/PRI Data Capture Card.

The *Recorder* application stores each stream's data in a single file up to a maximum of 2-hours (32 timeslots) or up to 24 hours (selective timeslots).

The *Replayer* application replays individual files and sequential files (from SomerData PC-VDR E1/PRI Recorder). It can also create individual E1/PRI data files from contiguous sequential-file segments, up to a maximum of 2 hours.

The *File Reader* program can be installed on Windows XP™ and Windows 2000™ PCs without a R2D3 card. It provides off-line soft-replay of E1/PRI data files (*.R2D file extension) that have been recorded using using SomerData E1/PRI Recorders and software.

Recorder Application

- Full-frame recording (32-timeslots) or selective timeslot recording (mask/exclude timeslots)
- Record individual E1/PRI data files - up to 2 hours full-frame - 32 timeslots (including masked timeslot recording)¹
- Record selective timeslot (fractional) files - up to 24 hours (excluded timeslot recording)¹

¹ Longer recording times are available with PC-VDR recorder systems

- Card diagnostics
- Signal interface control (framed/unframed, impedance, connect/disconnect, downstream monitor)
- Input signal monitoring (Signal, Frame, AIS indicators)
- Hex and bitmap data displays
- Audio timeslot monitor through sound card

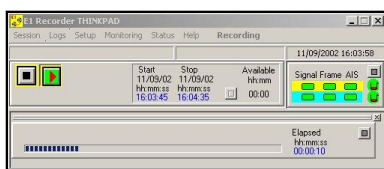
Replayer Application

- Replay individual and sequential E1/PRI data files
- Sequential file-stitching – create up to 2 hour data files
- Card diagnostics
- Hex and bitmap data displays
- Selective timeslot recording - mask or exclude
- Audio timeslot monitor through sound card
- Internal/external replay clock selection
- Dub (copy) complete recording or selected extract
- Export selected timeslots to new E1/PRI data files (mask/exclude timeslots)²

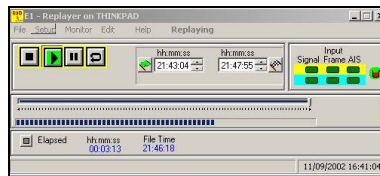
² Available as an option

File Reader

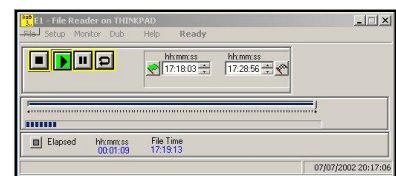
- Installs on Windows XP™ and Windows 2000™ PC
- Replay individual and sequential E1/PRI data files
- Sequential file-stitching – create up to 2 hour data files
- Hex data displays
- Bitmap data displays
- Audio timeslot monitor through sound card
- Dub (copy) complete recording or selected extract
- Export selected timeslots to new E1/PRI data files (mask/exclude timeslots)



Recorder



Replayer



File Reader