

DABTUX DAB/DMB – ETI Test Multiplexer



**DAB & DMB
Ensemble
Multiplex (ETI)
Stream Generator
with Scheduler**

DABTUX generates a DAB or DMB ensemble multiplex stream from files or an ETI/STI input.

When used in conjunction with a COFDM, **DABTUX** provides a flexible ETI stream generator for receiver testing applications.

DABTUX outputs an Ensemble Transport Interface (ETI) stream by generating a full Ensemble Multiplex based on user specified configurations and schedules.

Audio, Data and DMB video services can be selected from local source files or extracted from a live ETI input stream.

In addition to using source files from recorded services, **DABTUX** provides the flexibility for users to include custom test tones and data patterns for service testing of receivers.

Services can also be selected from an incoming ETI/STI (G.703/G.704) stream.

Highlights

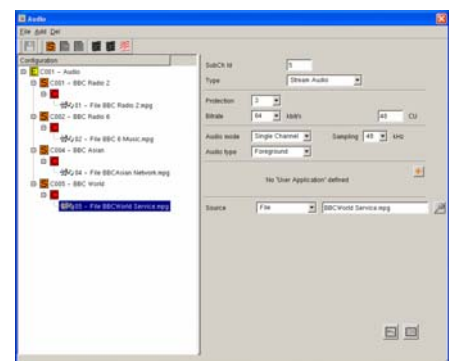
- Generates a complete Ensemble Multiplex for DAB and DMB receiver testing
- Selection of ETI/NA⁵³⁷⁶, ETI/NA⁵⁵⁹² or ETI/NI output formats
- MP2 audio files
- MP2 Audio files with DLS
- MP2-TS DMB files
- Select service(s) from incoming ETI/STI G.703/G.704 stream (Input Option)
- Data files (NPAD option)
- IP streaming (IP Tunnelling option)
- DMB streaming (DMB option)
 - UDP/IP input supports 188 byte and 204 byte formats
- Save ETI file (option - compatible with SomerData replayer)



Current Configuration



Available Configurations



Ensemble & Services Setup